

Digital CVA: Status Report

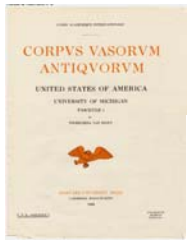
- Overview of www.cvaonline.org
- Processing CVAs
- Current status
- Getting up to date

Digital CVA: Status Report

- Overview of www.cvaonline.org
- **Processing CVAs**
- Current status
- Getting up to date

CVA Processing - Images

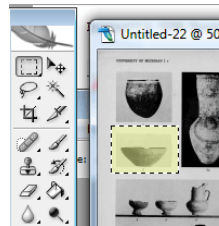
CVA Textual Pages and Plates



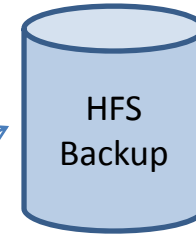
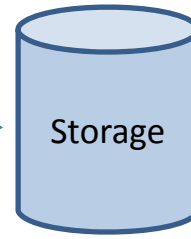
Scan



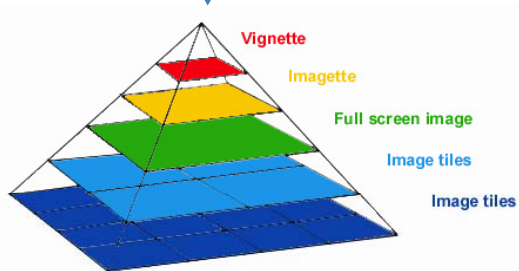
Crop & Single Image




Backup



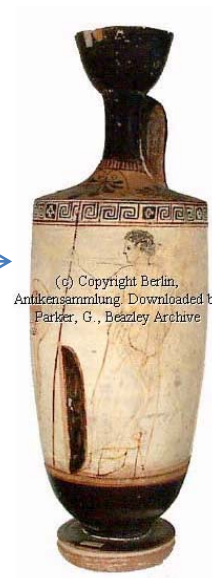
Convert to JTIP



Convert to SPIFF

	IMM 12 UK 94	79334
	Original Image : H = 3000 W = 4290	
	C:\DIR\SUBDIR\IMAGE.SPF	
Creator : F.M.L. Maskell		
Title : Cast of part of the Parthenon Frieze		
Description : Digital file created with 600 dpi		
Localisation : Ashmolean Museum		
Copyright : Ashmolean Museum		
Contact :		

Add Watermark



(c) Copyright Berlin, Antikensammlung. Downloaded by Parker, G., Beazley Archive

CVA Processing – Textual Data

CVA Textual Pages



Entering of data

Record	CAVI	Quick Edit	XML	List	Images	Delete	Photograph Album
Add Image							
Vase Number	<input type="checkbox"/>	1001219					
Fabric	<input type="checkbox"/>	BOEOTIAN, CABIRION WARE					
Technique	<input type="checkbox"/>	BLACK-FIGURE					
Sub Technique	<input type="checkbox"/>						
Shape Record	<input type="checkbox"/>	SKYPHOS					
Provenance	<input type="checkbox"/>						
Date	<input type="checkbox"/>						
Date Range	<input type="checkbox"/>						
Inscriptions	<input type="checkbox"/>						

Linking with images

Record	CAVI	Quick Edit	XML	List	Images	Delete	Photograph Album
Add Image							
<input type="button" value="Add to photo album"/> <input type="button" value="Add to photo album"/>							
Add Image	<input type="checkbox"/>	1001219					
Fabric	<input type="checkbox"/>	BOEOTIAN, CABIRION WARE					
Technique	<input type="checkbox"/>	BLACK-FIGURE					
Sub Technique	<input type="checkbox"/>						
Shape Record	<input type="checkbox"/>	SKYPHOS					
Provenance	<input type="checkbox"/>						
Date	<input type="checkbox"/>						
Date Range	<input type="checkbox"/>						
Inscriptions	<input type="checkbox"/>						

Checking and Correcting



Release to public site

- CVA
- The CVA Project
- Participating Countries
- Museums and Collections
- Types of Pottery
- Browse or Search
- Sponsors



Digital CVA: Current Status

- Number of fascicules processed and available on the website: 322
- Number of fascicules processed and held back for release: 14
- Number of CVA records in database: 44,200.
- Number of images: 130,000 (4,000 GB).

Digital CVA: Getting Up To Date

- Project ended 2004.
- Number of fascicules published since the end of the project: 36
- Number of fascicules in press: 2

Digital CVA: Getting Up To Date

- Estimated processing time per CVA:
 - Scanning: 2 hours
 - Image cropping & single imaging: 6 hours
 - Data entry (including searching for existing records): 3 days
 - Processing images and linking: 1 day (1 hour interactive)
 - Checking & correcting data: 1 day
- Total: 1 week per CVA
- Estimated 1 year for 40 CVAs.
- Including bringing website up to date.

Digital CVA: Getting Up To Date

- If electronic files were available from the publisher. There would only be the saving of 2 hours scanning per CVA. The other stages would still be required, as the language and naming convention used in each CVA would be different so still requiring manual data entry.
- However, this would be preferred as the quality of images should be improved and the ability to search any of the textual content would be possible (not just the keywords).

Digital CVA: Updating

- Participants can be given accounts to update records relating to their own collections.
- The core data is part of the main Beazley Archive pottery database, so only certain fields will be editable by remote users.
- Participants can also add any number of records.
- Participants can add images to existing or new records.
- Records will then be available to the public for viewing.



Beazley Archive Extensible Database

You may only use the Beazley Archive databases for academic / research purposes.
No part of the database whether image, text or program may be reproduced for any purpose.
Use of the database is logged and monitored regularly.

The University of Oxford (Beazley Archive) holds copyright on all data presented here.
Images have been protected by registration software ([Netimage](#), France) and digital fingerprinting ([Datamark](#), UK and [IBM](#), US).
Attempting to reproduce or alter an image in any way is an offence punishable under international law.

You may continue to search the Beazley Archive databases without logging in or if you want to preserve your Photograph Album for future sessions you may register and login to your account.

[Search The Database Without Logging In](#)

Username:

Password:

Please [click here](#) if you have not already registered for use of the database and would like to register now.

Please [click here](#) if you have already registered but have forgotten your password.

Please note, you must have cookies enabled on your browser in order for this site to operate correctly.
In order to see the images you must also enable JAVA and ensure that any firewall you have allows both ports 80 and 81 through.
If you wish to suggest additions or corrections to the database, please contact the Database Director, Dr. T. Mannack.

Email: thomas.mannack@beazley.ox.ac.uk

Tel: +44 1865 278084 Fax: +44 1865 278082

The Beazley Archive is not able to reply to requests for photographs of objects,
nor can it give permission for images to be reproduced in any form.

Such requests must be directed to the museum or collection owning the object.

[Return to Beazley Archive Pottery site](#)

Standard Search

Advanced Search

Help on searching

Database

Pottery ▾

Vase Number

Fabric

List

[Thesaurus](#)

Technique

List

[Thesaurus](#)

Shape Name

List

[Thesaurus](#)

Provenance

List

[Thesaurus](#)

Inscription Type

List

[Thesaurus](#)

Inscription

List

[Thesaurus](#)

Artist Name

List

[Thesaurus](#)

Scholar Name

List

[Thesaurus](#)

Decoration Description

List

[Thesaurus](#) Same Decorated Area

Collection Name

Berlin, Antikensammlung

List

[Thesaurus](#)

Number

Publication Name

List

[Thesaurus](#)

Reference

In Beazley's Lists

With Images

With Thesaurus

Order By

Vase Number ▾

Display pulldown lists on this form

NB. If you select this option the form will take longer to display as there is a large amount of data in the pull down lists.



[Add to photo album](#)



[Add to photo album](#)



[Add to photo album](#)



[Add to photo album](#)



[Add to photo album](#)

Vase Number	138
Fabric	ATHENIAN
Technique	BLACK-FIGURE
Shape Record	PELIKE
Provenance	ITALY, ORVIETO
Date	525 BC to 475 BC
Decoration	A: MAN, DRAWING WATER FROM PITHOS, WOMAN WITH HYDRIAI, SATYR AND MAENAD
Decoration	B: HERAKLES AND THE BULL
Collection	1: Berlin, Schloss Charlottenburg: 3228
Collection	2: Berlin, Antikensammlung: 3228
Publication Record	Corpus Vasorum Antiquorum: BERLIN, ANTIKENMUSEUM 7, 36-37, BEILAGE 6.4, PLS.(3021,3022,3041) 28.1-2, 29.1-2,48.5 View Whole CVA Plates
Publication Record	Hephaistos: 11/12 (1992/93) 72, FIG.18 (A)
Publication Record	Expedition, Bulletin of the Museum of the University of Pennsylvania: 19 (1976)1, 47, FIG.17 (A)
Publication Record	Marcade, J., Eros Kalos (Geneva, 1962): 116-17
Publication Record	Journal of Hellenic Studies: 95 (1975) PL.14E
Publication Record	Archaeological News: 8 (1979) 1, 3, FIG.3 (A)
Publication Record	Heilmeyer, W-D., et al., Antikensammlung Berlin, Die ausgestellten Werke (Berlin, 1988): 94, NO.1 (A)
Publication Record	Pfuhl, E., Malerei und Zeichnung der Griechen (Munich, 1923): FIG.276
Publication Record	Oakley, J.H. et al., Athenian Potters and Painters, The Conference Proceedings (Oxford, 1997): 64, FIG.1 (A)

Last updated 23/11/2009 15:03:00 by Greg Parker (Berlin). Created 18/10/2003 11:47:00 by Wagner, Claudia. Approved 23/11/2009 16:04:23 by Parker, Greg. Copyright © 2009 Beazley Archive, University of Oxford.

Serial	2		
Collection Code	BERA		
Collection Name	Berlin, Antikensammlung		
Number	3228		
Serial	<input type="text" value="3"/>		
Collection Code	<input type="text" value="bera"/>	BERA <input type="button" value="C"/>	
Collection Name	<input type="text"/>	Berlin, Antikensammlung <input type="button" value="C"/>	
Number	<input type="text" value="xxxx"/>		



[Add to photo album](#)



[Add to photo album](#)



[Add to photo album](#)



[Add to photo album](#)



[Add to photo album](#)

Vase Number	138
Fabric	ATHENIAN
Technique	BLACK-FIGURE
Shape Record	PELIKE
Provenance	ITALY, ORVIETO
Date	525 BC to 475 BC
Decoration	A: MAN, DRAWING WATER FROM PITHOS, WOMAN WITH HYDRIAI, SATYR AND MAENAD
Decoration	B: HERAKLES AND THE BULL
Collection	1: Berlin, Schloss Charlottenburg: 3228
Collection	2: Berlin, Antikensammlung: 3228
Publication Record	Corpus Vasorum Antiquorum: BERLIN, ANTIKENMUSEUM 7, 36-37, BEILAGE 6.4, PLS.(3021,3022,3041) 28.1-2, 29.1-2,48.5 View Whole CVA Plates
Publication Record	Hephaistos: 11/12 (1992/93) 72, FIG.18 (A)
Publication Record	Expedition, Bulletin of the Museum of the University of Pennsylvania: 19 (1976)1, 47, FIG.17 (A)
Publication Record	Marcade, J., Eros Kalos (Geneva, 1962): 116-17
Publication Record	Journal of Hellenic Studies: 95 (1975) PL.14E
Publication Record	Archaeological News: 8 (1979) 1, 3, FIG.3 (A)
Publication Record	Heilmeyer, W-D., et al., Antikensammlung Berlin, Die ausgestellten Werke (Berlin, 1988): 94, NO.1 (A)
Publication Record	Pfuhl, E., Malerei und Zeichnung der Griechen (Munich, 1923): FIG.276
Publication Record	Oakley, J.H. et al., Athenian Potters and Painters, The Conference Proceedings (Oxford, 1997): 64, FIG.1 (A)

Last updated 23/11/2009 15:03:00 by Greg Parker (Berlin). Created 18/10/2003 11:47:00 by Wagner, Claudia. Approved 23/11/2009 16:04:23 by Parker, Greg. Copyright © 2009 Beazley Archive, University of Oxford.

[<<](#)
[<](#)
[New Search](#)
[Refine Search](#)
[Add](#)
[Abandon](#)
[>](#)
[>>](#)

[Goto](#)

[Record](#)
[CAVI](#)
[Quick Edit](#)
[Images](#)
[Delete](#)
[Photograph Album](#)

Add Image

<u>Vase Number</u>	<input type="checkbox"/>	9022432
<u>Fabric</u>	<input checked="" type="checkbox"/>	ATHENIAN
<u>Technique</u>	<input checked="" type="checkbox"/>	BLACK-FIGURE
<u>Sub Technique</u>	<input type="checkbox"/>	
<u>Shape Record</u>	<input checked="" type="checkbox"/>	PELIKE
<u>Provenance</u>	<input checked="" type="checkbox"/>	ITALY, ORVIETO
<u>Date</u>	<input checked="" type="checkbox"/>	525 BC to 475 BC
<u>Date Range</u>	<input type="checkbox"/>	
<u>Inscriptions</u>	<input type="checkbox"/>	
<u>Attributed To</u>	<input type="checkbox"/>	
<u>Decoration</u>	<input type="checkbox"/>	
<u>Collection Record</u>	<input type="checkbox"/>	1: Berlin, Antikensammlung
<u>Publication Record</u>	<input type="checkbox"/>	
<u>CAVI Collection</u>	<input type="checkbox"/>	
<u>CAVI Lemma</u>	<input type="checkbox"/>	
<u>CAVI Subject</u>	<input type="checkbox"/>	
<u>CAVI Inscriptions</u>	<input type="checkbox"/>	
<u>CAVI Comments</u>	<input type="checkbox"/>	

Add image

Select File Type

Title / Notes

Image Number

Enter File Name

[Close](#)



Greg Parker (Berlin)
Berlin Remote Account

<< < Close > >> Goto Image Size 4 ▾

Record Number: 0

PELIKE. 3228. Italy, Orvieto. Berlin, Schloss Charlottenburg 3228.

Corpus Vasorum Antiquorum BERLIN, ANTIKENSAMMLUNG VIRTUAL 1, 36-37, BEILAGE 6.4, PLS.(3021,3022,3041) 28.1-2, 29.1-2,48.5.

Hephaistos 11/12 (1992/93) 72, FIG.18 (A).

Expedition, Bulletin of the Museum of the University of Pennsylvania 19 (1976)1, 47, FIG.17 (A).

Marcade, J., *Eros Kalos (Geneva, 1962)* 116-17.

Journal of Hellenic Studies 95 (1975) PL.14E.

Archaeological News 8 (1979) 1, 3, FIG.3 (A).

Heilmeyer, W-D., et al., *Antikenmuseum Berlin, Die ausgestellten Werke (Berlin, 1988)* 94, NO.1 (A).

Pfuhl, E., *Malerei und Zeichnung der Griechen (Munich, 1923)* FIG.276.

Oakley, J.H. et al., *Athenian Potters and Painters, The Conference Proceedings (Oxford, 1997)* 64, FIG.1 (A).

A: MAN, DRAWING WATER FROM PITHOS, WOMAN WITH HYDRIA, SATYR AND MAENAD.

B: HERAKLES AND THE BULL.

525BC to 475BC.

CLAROS

- First show how we linked to Henry Immerwahr's Corpus of Attic Vase Inscriptions.
- Immerwhar documented around 8,500 Attic Vases with Inscriptions.

print1G. 1 - 165.

SIGLA: A] lemma : B] subject : C] inscriptions : D] comments

1.

Aachen, Ludwig.

- A] RF cup. Colmar Painter. First quarter fifth. Ca. 490 (Lullies). *R. Lullies, Griechische Kunstwerke, Sammlung Ludwig (Aachener Kunstblätter 37, Düsseldorf 1968) 81/35 (facss.). Auktion 34 (M.M.), pls. 49f./153. *Para. 363, 507.
- B] Int: hoplitodromos: youth arming; shield on ground; aryballos, strigil, sponge. A: discobolus; young trainer; runner. B: runner between two javelin throwers.
- C] Int: to left of the athlete, starting near his right calf, ending above his forehead: Lusiwk(a)l^ow.(1) A: along the margin, in back of the discobolus: Lusiw. In the same position between trainer and runner: Lusiw. B: along the margin, above the jumper: hopaiw.
- D] Cf. also Hannover, Kestner Museum 1966.99, which has the same kalos-name; cited by Lullies, pp. 82-84. - Present location unknown to me.

(1)the facs. gives much smaller letters for this inscription than for the others.

2.

Aberdeen 743.

- A] RF cup. Antiphon Painter. Ca. 490. *Photo. ARV(2) 336/17. Journal of the Walters Art Gallery 23, 19.
- B] Int.: Youth hunting a boar. Ext.: plain.
- C] Int.: ho-pais-kalos formula (without kalos?).

3.

Aberdeen 744.+

- A] RF cup. From Vulci. Epiktetos. 510-500. *Beazley, JHS 51 (1931) 41/8, figs 2-3. CV, Italy 8, pl.1, B 29 and JHS 51, fig. 2 [the Florence fr.]. ARV(2) 73/28, Add.(2) 168. *Photo. (A) and dr. (Int.) by Beazley.
- B] Int.: satyr and fawn. A: Achilles and Ajax playing a board game, with Athena. B: komos.
- C] Int.: to left of figures: epoesen. A: To left and right of Athena's head: hipparxow.(1)
On the Florence fr. is Achilles' open mouth, from which: tessara.(2) B: kalo[w].(3)

CLAROS

Classical Art Research Online Services

Search

Search



[Home](#)

[CLAROS](#)

[Pottery](#)

[Gems](#)

[Sculpture](#)

[Iconography](#)

[Antiquaria](#)

[Dictionary](#)

[Tools](#)

Virtual integration of digital assets on classical art

About us

Partner Institutions:

Beazley Archive,
Oxford

German Archaeological
Institute, Berlin

Lexicon
Iconographicum
Mythologiae Classicae
(LIMC) - Paris, Basel

Research Archive for
Ancient Sculpture,
Cologne

Lexicon of Greek
Personal Names

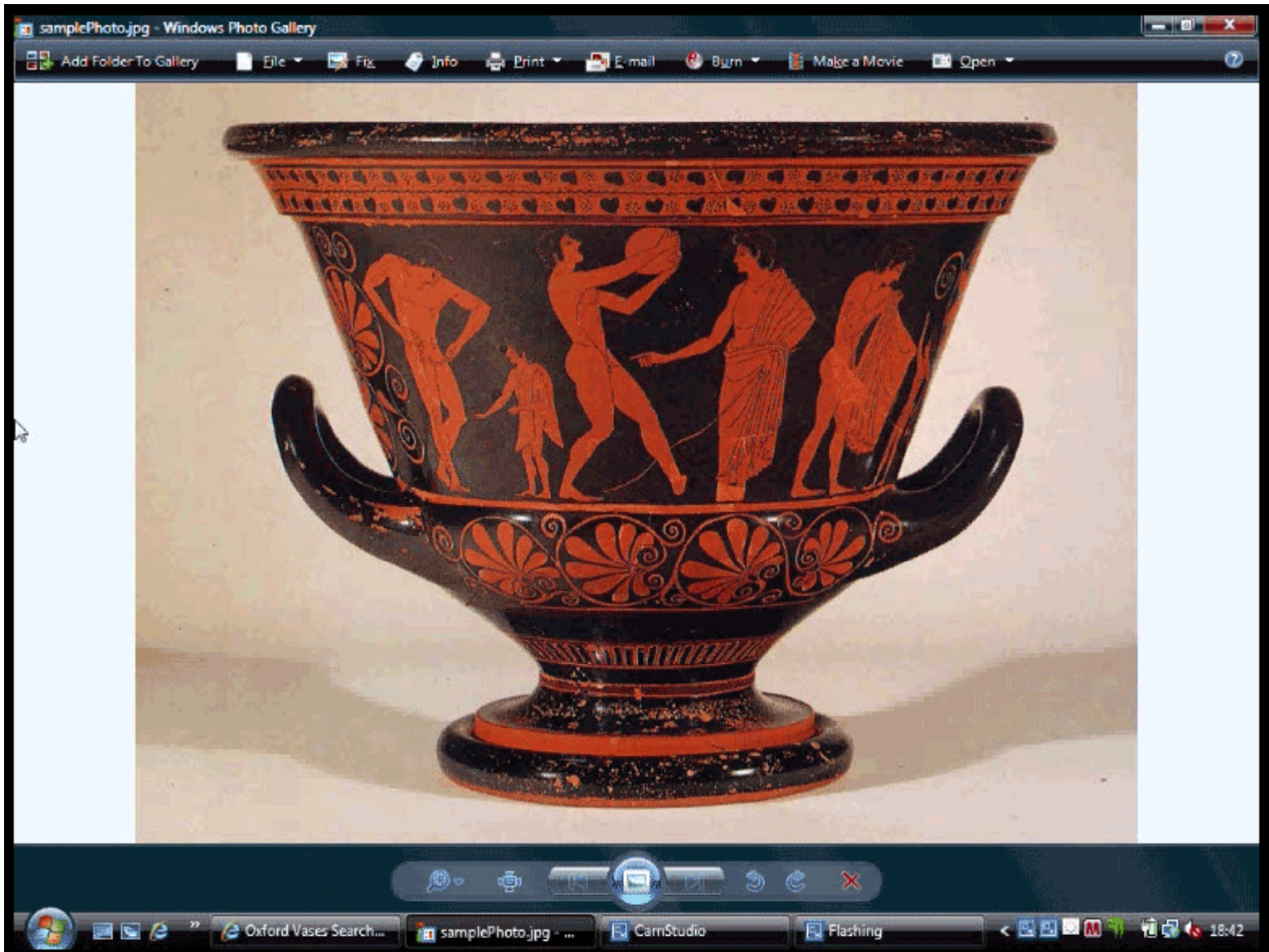


News

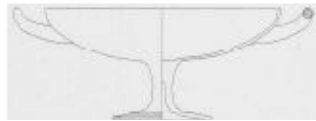
**Beazley Archive / LGPN
Pilot Project**

**Berlin, FIEC Conference, 29
August: proof of concept
launch**

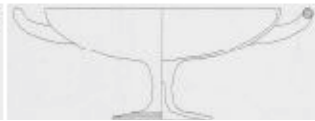
**Oxford Alumni Weekend,
25 September**



Record CAVI Quick Edit XML List Images Delete Photograph Album



[Add to photo album](#)



[Add to photo album](#)



[Add to photo album](#)



[Add to photo album](#)



[Add to photo album](#)

Vase Number	1010226
Fabric	ATHENIAN
Technique	RED-FIGURE
Shape Record	CUP B
Collection	Osaka, Oka Collection: 13
Publication Record	Corpus Vasorum Antiquorum: JAPAN, SCHWARZ- UND ROTFIGURIGE VASEN IN JAPANISCHEN SAMMLUNGEN 2, 35-36 View Whole CVA Plates

Record CAVI Quick Edit XML List Images Delete Photograph Album



[Add to photo album](#)



[Add to photo album](#)



[Add to photo album](#)

Vase Number	211/59
Fabric	ATHENIAN
Technique	RED-FIGURE
Shape Record	CUP B
Date Range	475-425
Attributed To	SPLANCHNOPT P by BEAZLEY
Decoration	B: DRAPED MEN, WITH STAFFS, WOMEN, ONE WITH HORROR, SASH SUSPENDED
Decoration	A: DRAPED YOUTHS, WITH STAFFS, PURSE AND MEAT (?), WOMEN, PIPES CASE, SASH, BAG AND WRITING CASE SUSPENDED
Decoration	I: EUS AND ITHONUS
Collector	1: Luzern, Market, Ars Antiqua: XXXX211759
Collector	2: Sakai, Oka: XXXX211759
Publication Record	Yoshikawa, I, Special Exhibition of Ancient Greek Vases from Japanese Collections (Nara, 1988): 32, 69, NO.34 (I, 1988)
Publication Record	Beazley, J.D., Attic Red-Figure Vase-Painters, 2nd edition (Oxford, 1963): 892.8
Publication Record	Carpenter, T.H., with Mannack, T., and Mendonca, M., Beazley Addenda, 2nd edition (Oxford, 1985): 303

Data

- University of Oxford – Beazley Archive
 - Electronic documentation started 1979
 - 150,000 Pottery records and 130,000 images
 - 50,000 Engraved gem and cameo records and 30,000 images
 - 900 Plaster casts records (classical sculpture) and 1000 images
 - 900 Antiquarian photographs
- University of Oxford - Lexicon of Greek Personal Names
 - Electronic documentation started 1975.
 - 400,000 recorded individuals. Over 35,000 unique personal names.
- University of Cologne – Research Sculpture Archive
 - Electronic documentation started 1972
 - 250,000 Sculpture records, 490,000 images.

Data

- German Archaeological Institute
 - 1,500,000 photographs
- University of Paris X - Lexicon Iconographicum Mythologiae Classicae
 - Created 1972.
 - 100,000 records, 180,000 images of mythological and religious iconography from 2,000 museums and collections.
- Total
 - 2 million records and images

Databases

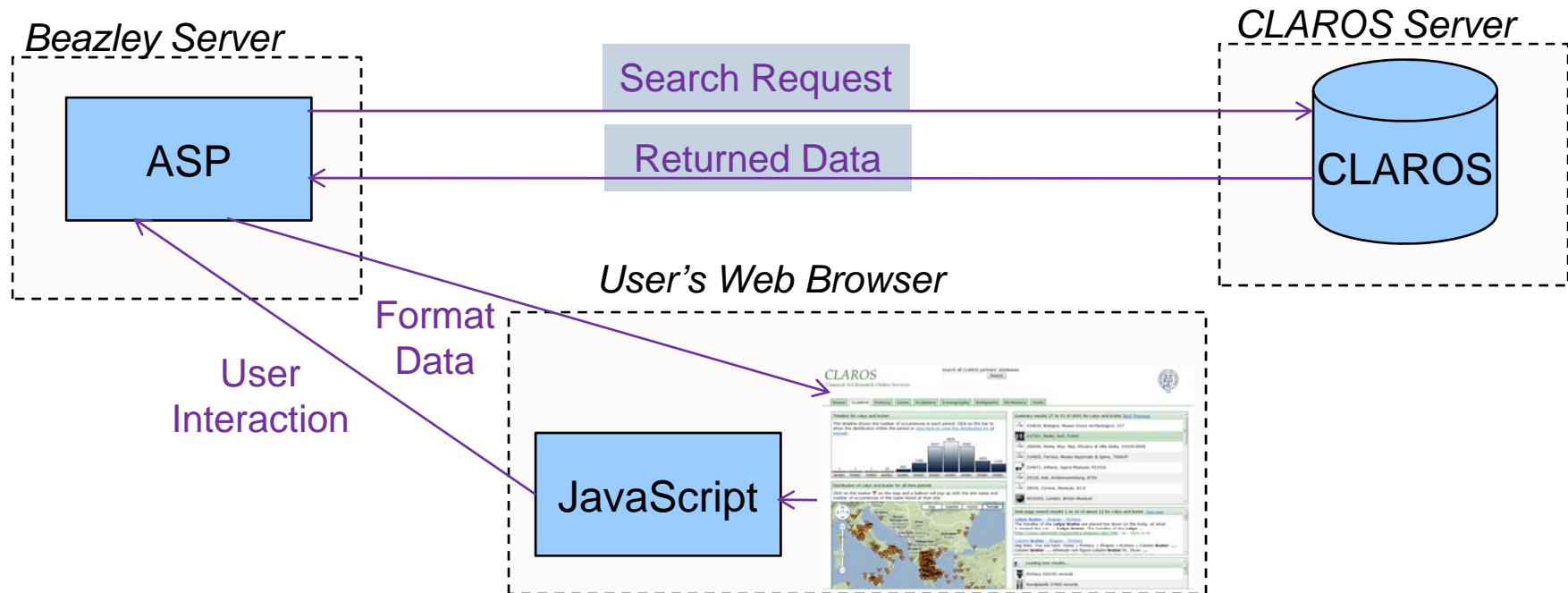
- Beazley Archive: 'XDB' – XML data, SQL Server Database, ASP front end.
- Cologne Research Archive and German Archaeological Institute: 'Arachne' - MySQL database, PHP front end.
- LIMC: MySQL database, PHP front end.
- LGPN: Ingres relational database, also available as an eXist XML database serving TEI-XML data. XQuery front end.

Databases

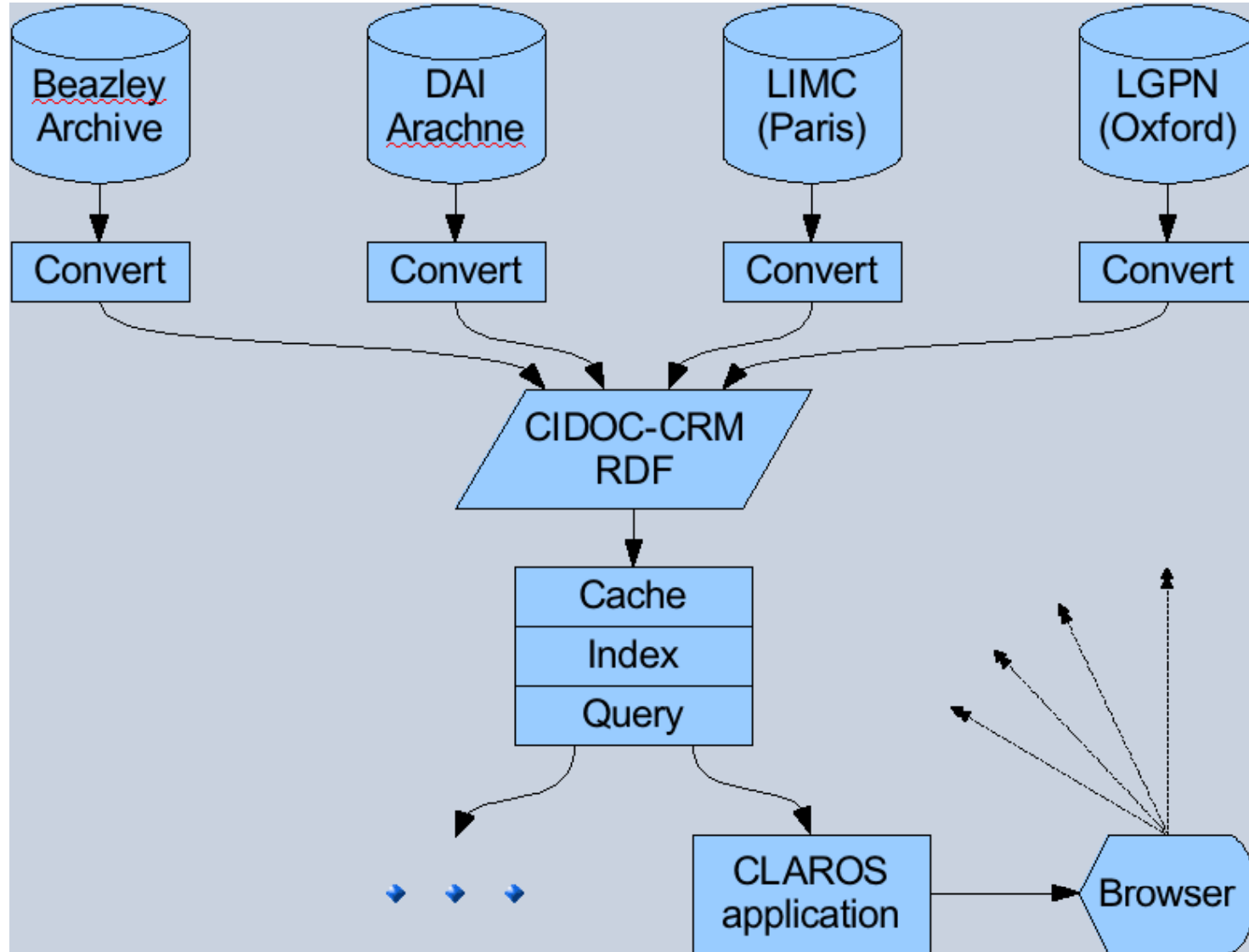
- The variety of databases demonstrates how other partners can join with relatively little effort.
- No changes required to existing databases or programs.
- Interchange of data is achieved by export of underlying data to CIDOC-CRM.

CLAROS Explorer

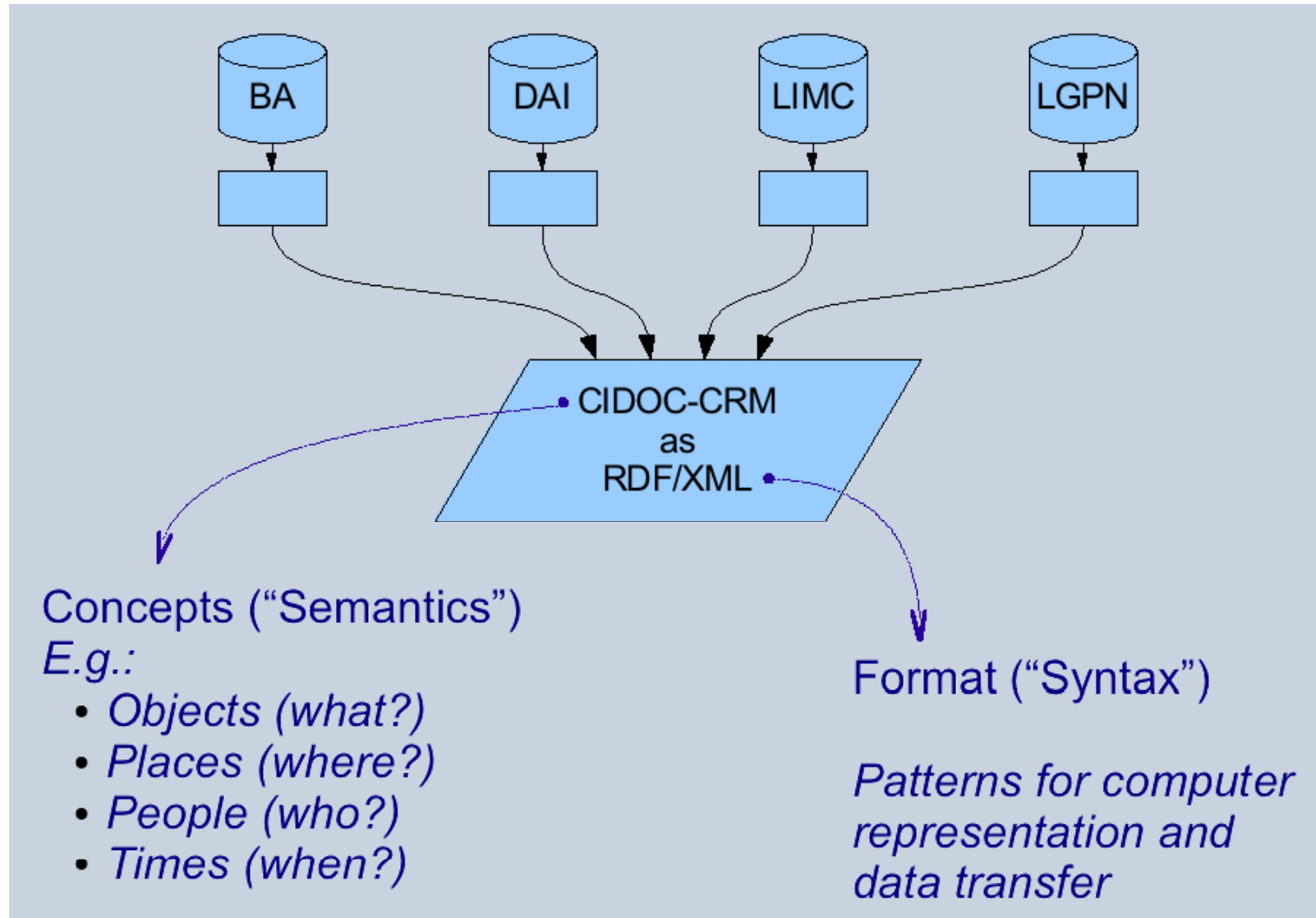
- Each partner can integrate CLAROS data from the other partners using his own programming platform.
- As an example Beazley Archive set up the CLAROS Explorer that you have just seen demonstrated to show what is possible.



CLAROS System Components



Combining Disparate Data



Technicalities

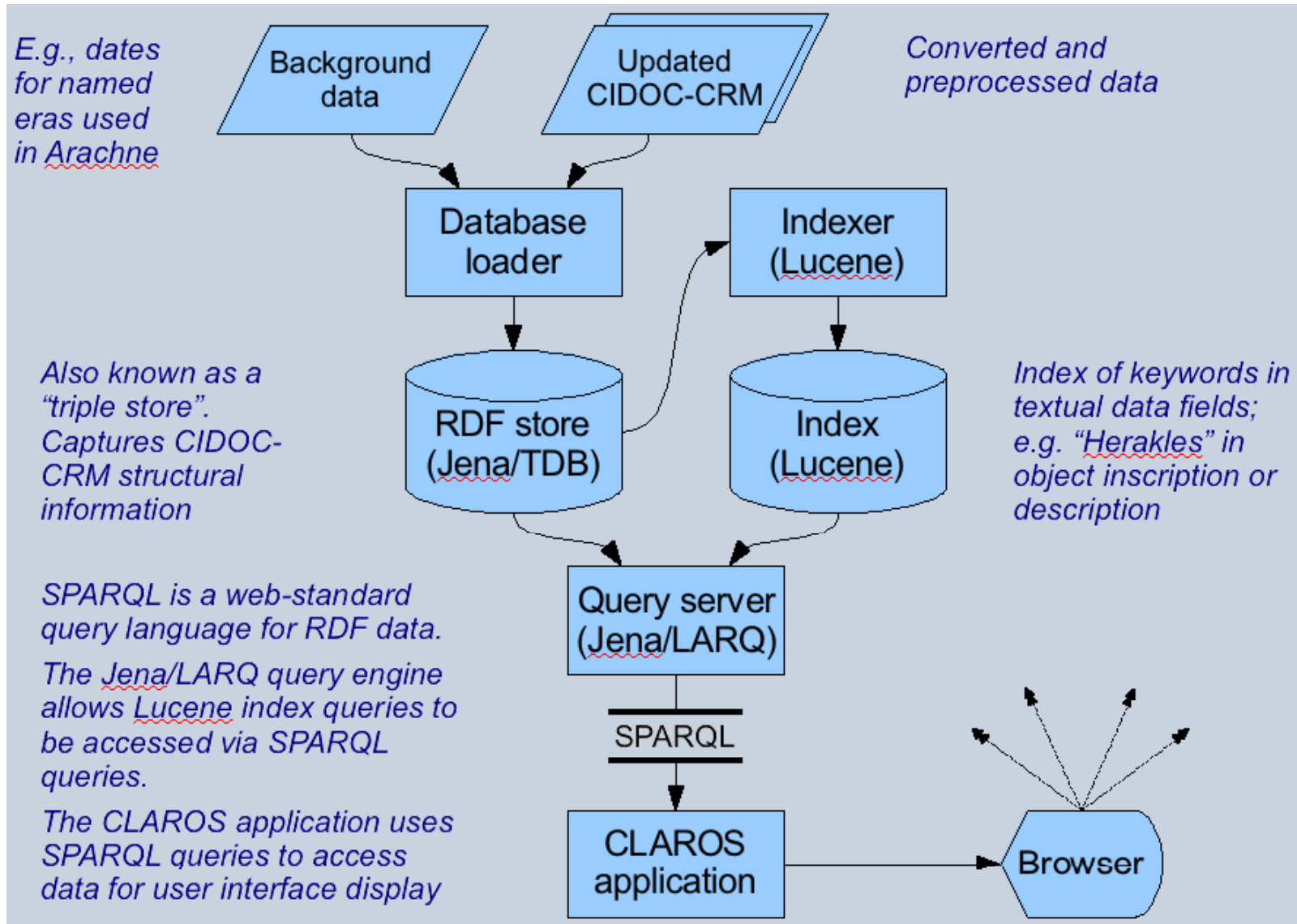
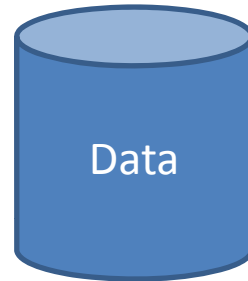


Image Recognition

Visually defined query



“It is an amphora

... and here are similar objects
in the archive”

What is this?

[Next](#) [0](#) [1](#) [2](#) [3](#) [4](#) [5](#) [6](#) [7](#) [8](#) [9](#) ... [17](#) Showing vases 1 to 50 of 858.



Shape Representation

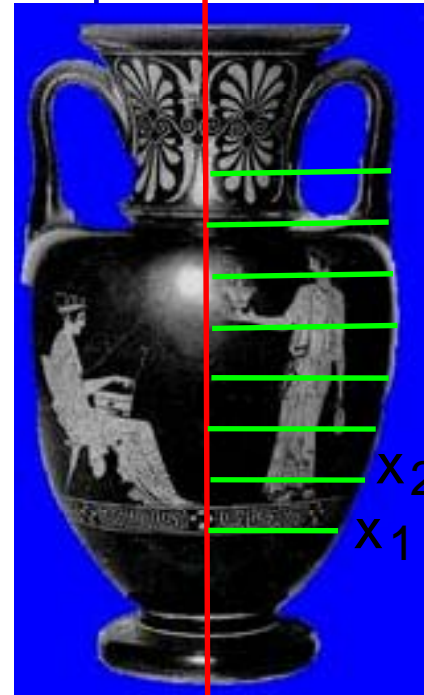
original image



foreground separation



silhouette representation



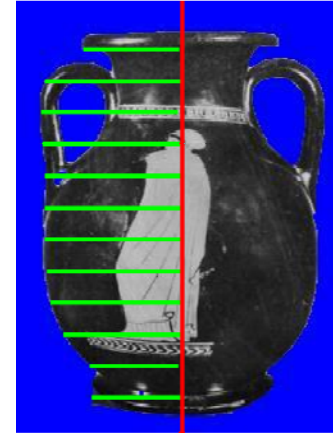
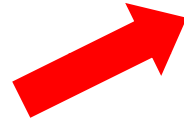
vector

$$\begin{bmatrix} X_1 \\ X_2 \\ \cdot \\ \cdot \\ \cdot \\ X_n \end{bmatrix}$$

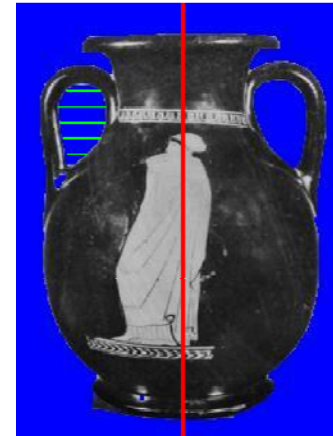
X

- No representation of patterns or surface markings
- 100-dimensional “vase shape space”

Shape Representation- details

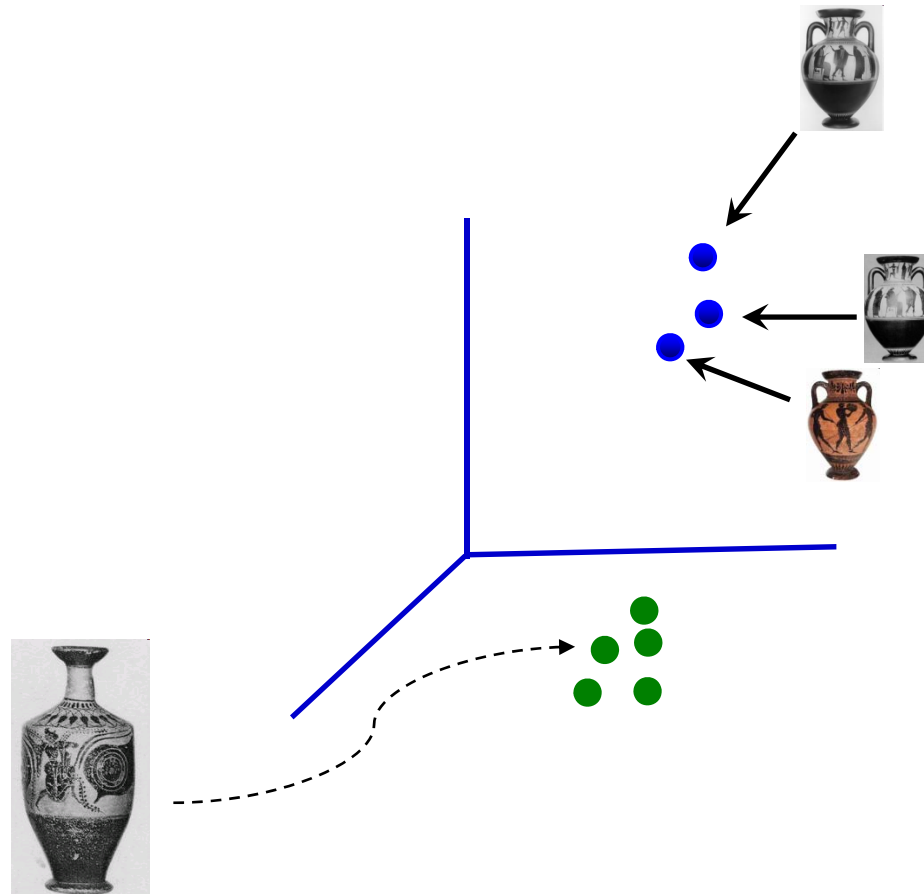


silhouette
(both sides)

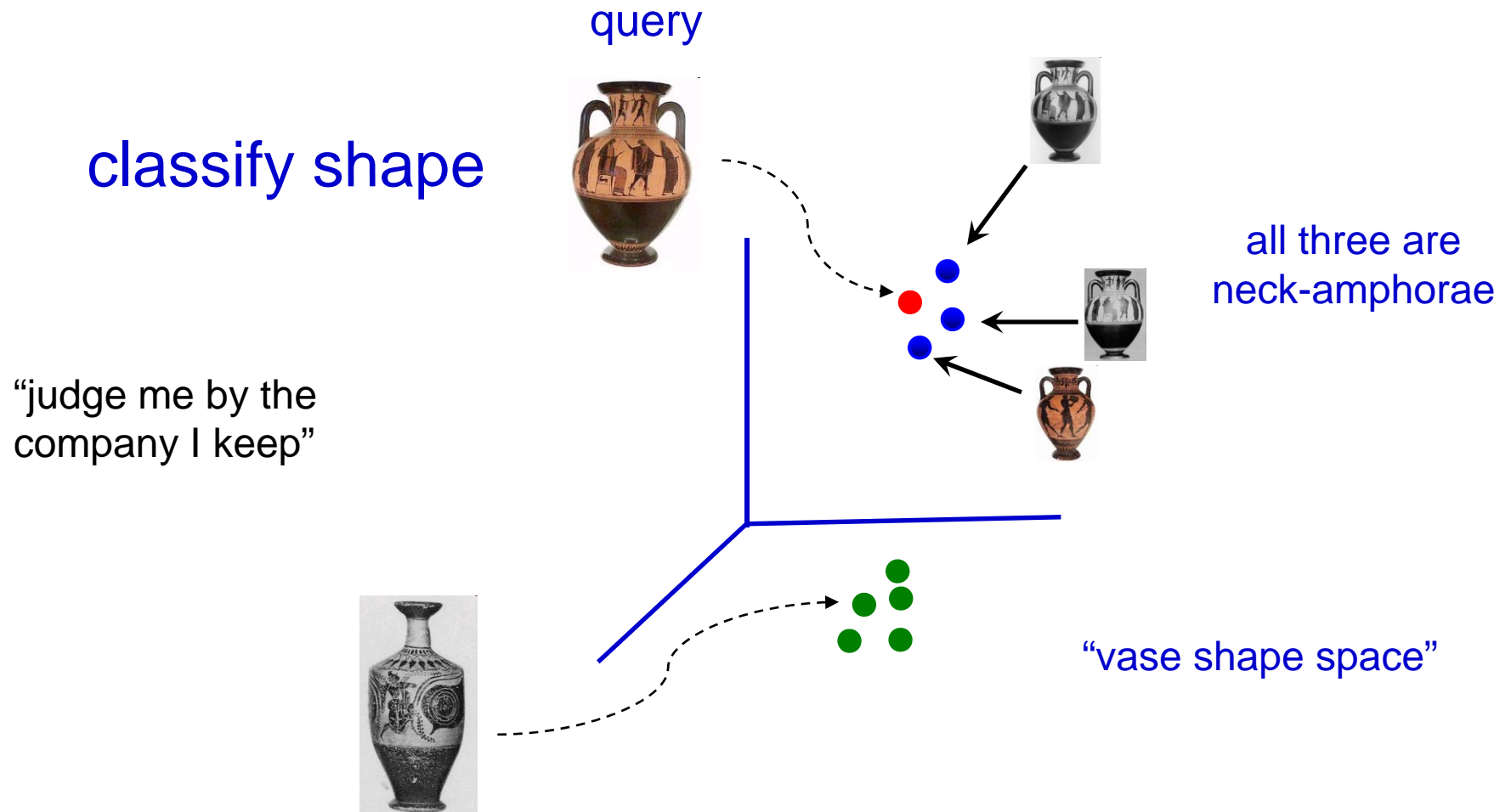


handles

Vase shape space



Compute three nearest neighbours for each vase



Step by step demonstration:






Step 2: classify shape

OxfordVases
Search

In cooperation with
CLAROS
Classical Art Research Online Services

File: Browse... or URL: Upload & Classify [Help&Hints](#)

Shape is **amphora neck** (click for shape timeline).

Uploaded vase-image	Foreground separation	Top 3 matches		
				
		('amphora', 'neck')	('amphora', 'neck')	('amphora', 'neck')

Step by step demonstration:

Step 3: matches in CLAROS



CLAROS Explorer – Further Development

- Linked Multi-lingual Thesauri
 - HERAKLES -> HERCULES, HÉRACLÈS, ERACLE, HERACLES
- Hierarchy of place names / geo-coordinates
 - GREECE -> ATTICA -> ATHENS -> ACROPOLIS

